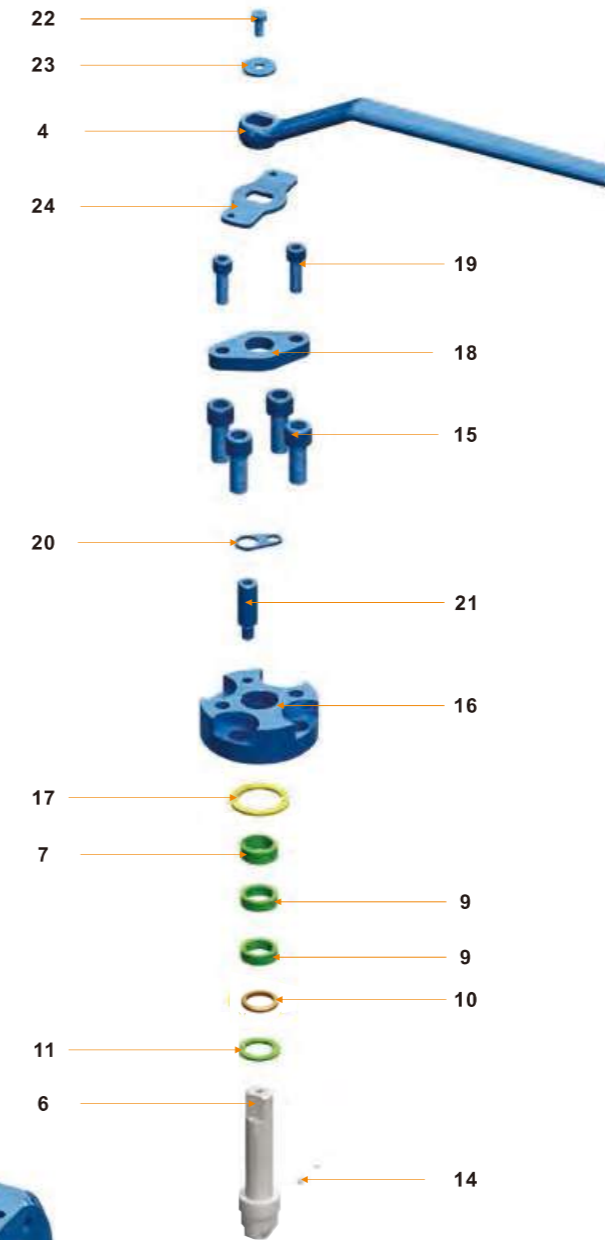


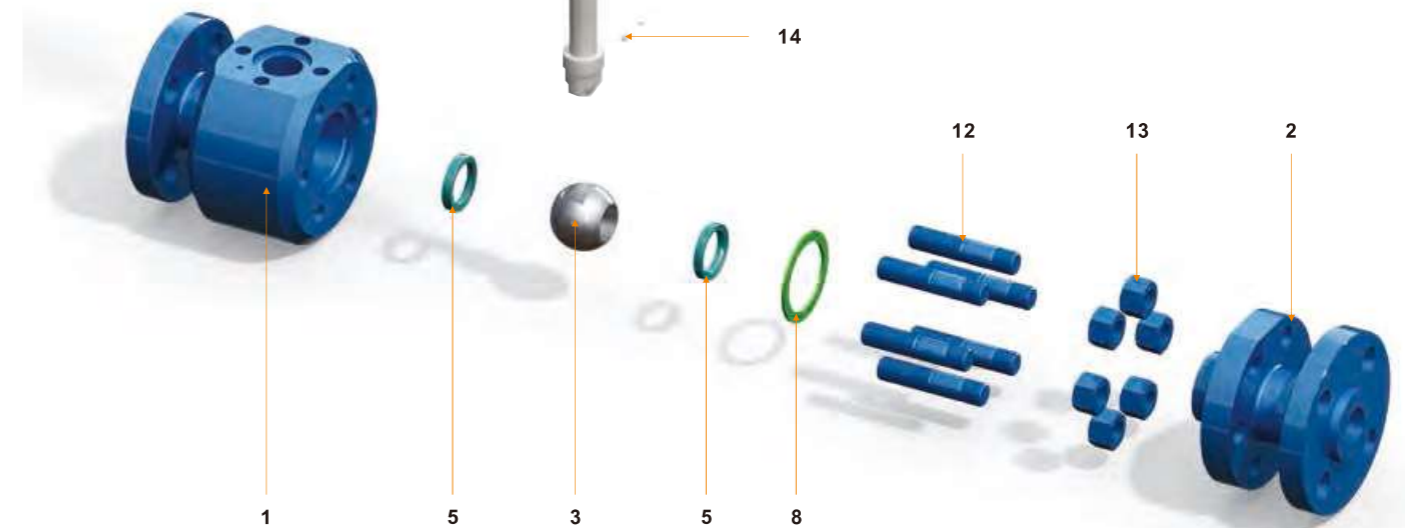
- 1 Double "D" Stem Head: ensures handle lever will always be mounted correctly, parallel to the media flow, indicating valve open and closed positions.
- 2 Reliable Flow Locking Device: Valve is equipped with an integral locking device to secure flow.
- 3 Anti-static Device: Spring-loaded plunger assures the electrical continuity between the ball, stem and body, to avoid static buildup.
- 4 Blow-out proof stem: The lower end of the stem is T-shaped structured, protected by boss of body, which assures stem retention against any pressure.
- 5 Bolted body-cap configuration: Properly torqued nut is used to maintain seal performance.
- 6 Fire Safe Design: Metal to metal sealing shuts off valve flow when soft sealing materials are destroyed by fire.

APPLICATIONS

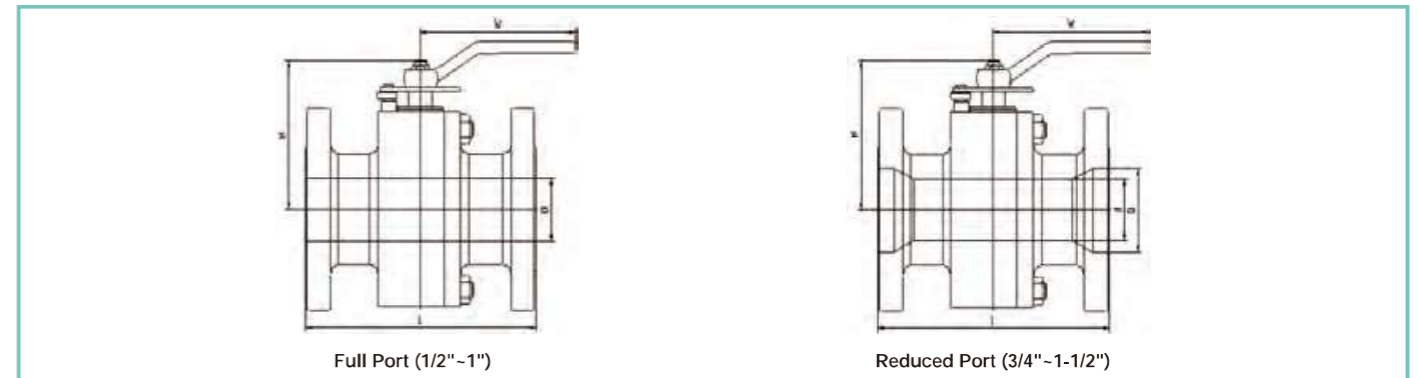
- Refinery
- Petrochemical
- Power
- Chemical
- Pharmaceutical
- Paper



Index no	Part
1	Body
2	Cap
3	Ball
4	Lever
5	Seat
6	Stem
7	Gland
8	Gasket
9	Packing Set
10	Spacer Ring
11	Thrust Washer
12	Stud
13	Nut
14	Anti Static Device
15	Bolt
16	Cover
17	Gasket
18	Gland Flange
19	Bolt
20	Locking Plate
21	Screw
22	Bolt
23	Washer
24	Stop Plate



No	Part	Standard	Stainless Steel	Sour Service	Low Temperature Service
1	Body	ASTMA105N	ASTMA182-F316	ASTMA105N	ASTMA350-LF2
2	Cap	ASTMA105N	ASTMA182-F316	ASTMA105N	ASTMA350-LF2
3	Ball	ASTMA105N/ENP	ASTMA182-F316	ASTMA105N/ENP	ASTMA182-F316
4	Lever	Carbon Steel	Carbon Steel	Carbon Steel	Carbon Steel
5	Seal	PTFE	PTFE	PTFE	PTFE
6	Stem	ASTMA182-F6a	ASTMA182-F316	ASTMA182-F6a	ASTMA182-F316
7	Gland	ASTMA276-420	ASTMA276-316	ASTMA276-420	ASTMA276-316
8	Gasket	316 S.S.+Graphite	316 S.S.+Graphite	316 S.S.+Graphite	316 S.S.+Graphite
9	Packing Set	Graphite	Graphite	Graphite	Graphite
10	Spacer Ring	ASTMA276-420	ASTMA276-316	ASTMA276-420	ASTMA276-316
11	Thrust Washer	PTFE	PTFE	PTFE	PTFE
12	Stud	ASTMA193-B7	ASTMA193-B8	ASTMA193-B7M	ASTMA320-L7M
13	Nut	ASTMA194-2H	ASTMA194-8	ASTMA194-2HM	ASTMA194-7M
14	Anti Static Device	S.S.	S.S.	S.S.	S.S.
15	Bolt	Carbon Steel	S.S.	Carbon Steel	S.S.
16	Cover	ASTMA105N	ASTMA182-F316	ASTMA105N	ASTMA350-LF2
17	Gasket	316 S.S.+Graphite	316 S.S.+Graphite	316 S.S.+Graphite	316 S.S.+Graphite
18	Gland Flange	ASTMA216-WCB	ASTMA351-CF8	ASTMA216-WCB	ASTMA352-LCB
19	Bolt	ASTMA193-B7	ASTMA193-B8	ASTMA193-B7M	ASTMA320-L7M
20	Locking Plate	S.S.	S.S.	S.S.	S.S.
21	Screw	S.S.	S.S.	S.S.	S.S.
22	Bolt	Carbon Steel	S.S.	Carbon Steel	S.S.
23	Washer	Carbon Steel	S.S.	Carbon Steel	S.S.
24	Stop Plate	Carbon Steel	Carbon Steel	Carbon Steel	Carbon Steel



Class 150 Dimension and Weight

Full Port											
Size		D		L		H		W		Weight	
in	mm	in	mm	in	mm	in	mm	in	mm	lb	Kg
1/2	15	0.50	13	4.25	108	2.19	55.50	6.50	165	5.50	2.50
3/4	20	0.75	19	4.61	117	2.58	65.50	6.50	165	7.70	3.50
1	25	1.00	25	5.00	127	3.03	77	8.46	215	11.00	5.00

Reduced Port													
Size		d		D		L		H		W		Weight	
in	mm	in	mm	in	mm	in	mm	in	mm	in	mm	lb	Kg
3/4*1/2	20*15	0.50	13	0.75	19	4.61	117	2.19	55.50	6.50	165	6.60	3.00
1*3/4	25*20	0.75	19	1.00	25	5.00	127	2.58	65.50	6.50	165	8.80	4.00
1-1/2*1	40*25	1.00	25	1.50	38	6.50	165	3.03	77	8.46	215	15.40	7.00

Class 300 Dimension and Weight

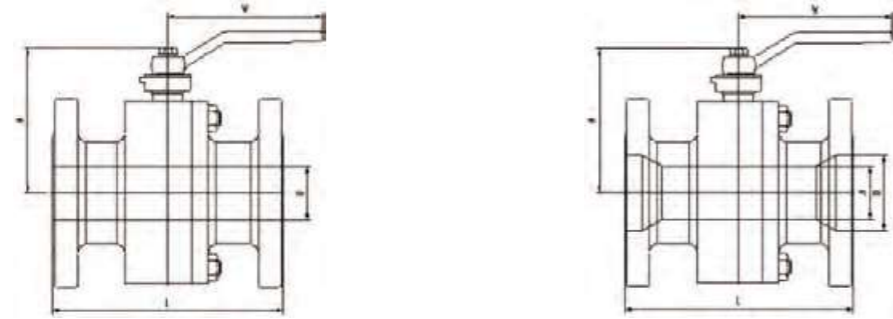
Full Port											
Size		D		L		H		W		Weight	
in	mm	in	mm	in	mm	in	mm	in	mm	lb	Kg
1/2	15	0.50	13	5.51	140	2.19	55.50	6.50	165	6.60	3.00
3/4	20	0.75	19	5.98	152	2.58	65.50	6.50	165	8.80	4.00
1	25	1.00	25	6.50	165	3.03	77	8.46	215	15.40	7.00

Reduced Port													
Size		d		D		L		H		W		Weight	
in	mm	in	mm	in	mm	in	mm	in	mm	in	mm	lb	Kg
3/4*1/2	20*15	0.50	13	0.75	19	5.98	152	2.19	55.50	6.50	165	8.80	4.00
1*3/4	25*20	0.75	19	1.00	25	6.50	165	2.58	65.50	6.50	165	11.00	5.00
1-1/2*1	40*25	1.00	25	1.50	38	7.48	190	3.03	77	8.46	215	19.80	9.00

Class 600 Dimension and Weight

Full Port											
Size		D		L		H		W		Weight	
in	mm	in	mm	in	mm	in	mm	in	mm	lb	Kg
3	80	3.00	76	14.02	356	6.30	160	15.75	400	136.70	62.00

Reduced Port													
Size		d		D		L		H		W		Weight	
in	mm	in	mm	in	mm	in	mm	in	mm	in	mm	lb	Kg
4*3	100*80	3.00	76	4.00	102	17.01	432	6.30	160	15.75	400	180.80	82.00



Full Port (1-1/2"-3")

Reduced Port (2"-4")

Class 150 Dimension and Weight

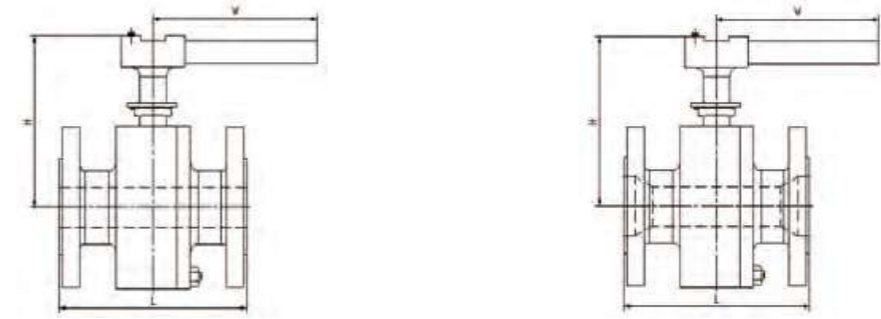
Full Port											
Size		D		L		H		W		Weight	
in	mm	in	mm	in	mm	in	mm	in	mm	lb	Kg
1-1/2	40	1.50	38	6.50	165	4.21	107	10.43	265	24.30	11.00
2	50	2.00	51	7.01	178	4.84	123	10.43	265	35.30	16.00
2-1/2	65	2.50	64	7.48	190	5.71	145	11.22	285	57.30	26.00
3	80	3.00	76	7.99	203	6.50	165	11.81	300	70.50	32.00
4	100	4.00	102	9.02	229	7.68	195	15.75	400	116.80	53.00

Reduced Port													
Size		d		D		L		H		W		Weight	
in	mm	in	mm	in	mm	in	mm	in	mm	in	mm	lb	Kg
2*1-1/2	50*40	1.50	38	2.00	51	7.01	178	4.21	107	10.43	265	29.80	13.50
3*2	80*50	2.00	51	2.50	64	7.99	203	4.84	123	10.43	265	44.10	20.00
4*3	100*80	3.00	76	4.00	102	9.02	229	6.50	165	11.81	300	83.80	38.00
6*4	150*100	4.00	102	6.00	152	15.51	394	7.68	195	15.75	400	158.70	72.00

Class 300 Dimension and Weight

Full Port											
Size		D		L		H		W		Weight	
in	mm	in	mm	in	mm	in	mm	in	mm	lb	Kg
1-1/2	40	1.50	38	7.48	190	4.21	107	10.43	265	30.90	14.00
2	50	2.00	51	8.50	216	4.84	123	10.43	265	39.70	18.00
2-1/2	65	2.50	64	9.49	241	5.71	145	11.22	285	63.90	29.00
3	80	3.00	76	11.14	283	6.50	165	11.81	300	88.20	40.00
4	100	4.00	102	12.01	305	7.68	195	15.75	400	163.10	74.00

Reduced Port													
Size		d		D		L		H		W		Weight	
in	mm	in	mm	in	mm	in	mm	in	mm	in	mm	lb	Kg
2*1-1/2	50*40	1.50	38	2.00	51	8.50	216	4.21	107	10.43	265	32.00	14.50
3*2	80*50	2.00	51	2.50	64	11.14	283	4.84	123	10.43	265	55.10	25.00
4*3	100*80	3.00	76	4.00	102	12.01	305	6.50	165	11.81	300	110.20	50.00
6*4	150*100	4.00	102	6.00	152	15.87	403	7.68	195	15.75	400	211.60	96.00



Full Port (3"-4")

Reduced Port (6")

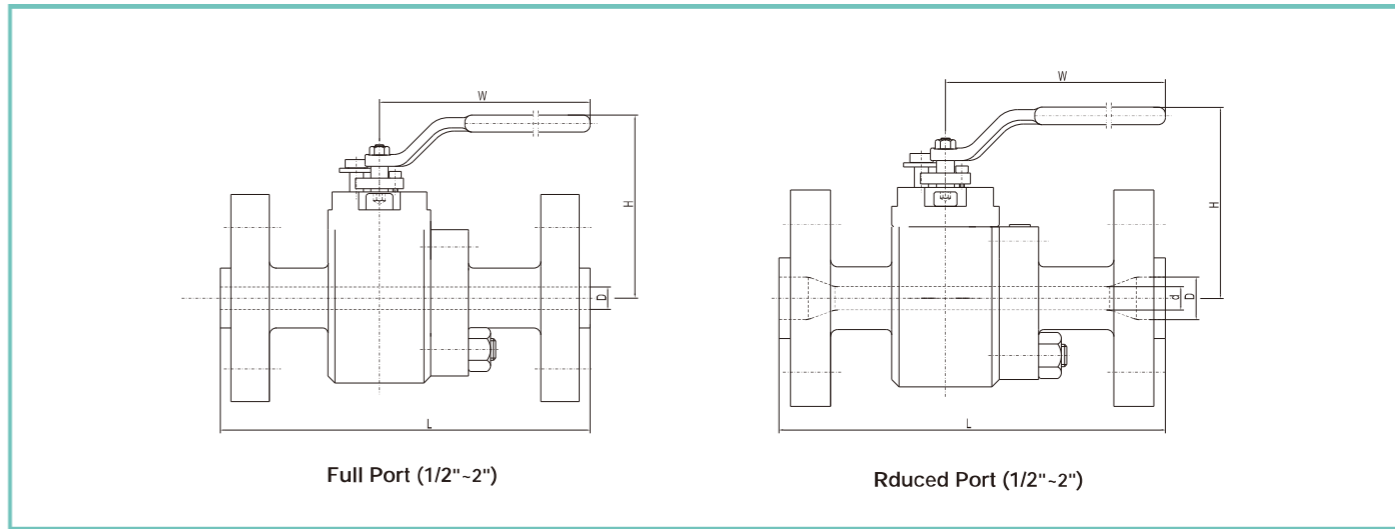
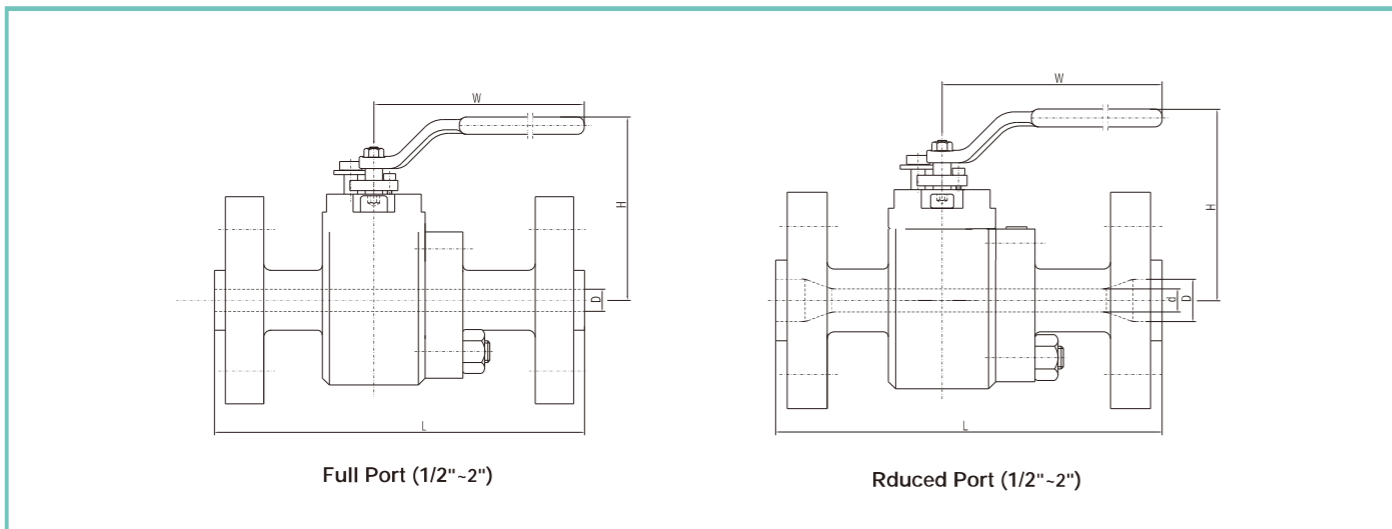
Class 600 Dimension and Weight

Full Port											
Size		D		L		H		W		Weight	
in	mm	in	mm	in	mm	in	mm	in	mm	lb	Kg
4	100	4.00	102	17.01	432	11.93	303	39.17	995	297.60	135.00

Class 900 Dimension and Weight

Full Port											
Size		D		L		H		W		Weight	
in	mm	in	mm	in	mm	in	mm	in	mm	lb	Kg
3	80	3.00	76	15.00	381	9.80	249	31.50	800	198.40	90.00

Reduced Port													
Size		d		D		L		H		W		Weight	
in	mm	in	mm	in	mm	in	mm	in	mm	in	mm	lb	Kg
4*3	100*80	3.00	76	4.00	102	18.00	457	9.80	249	31.50	800	249.10	113.00



Class 400/600 Dimension and Weight

Full Port											
Size		D		L		H		W		Weight	
in	mm	in	mm	in	mm	in	mm	in	mm	lb	Kg
1/2"	15	0.50	12.7	6.50	165	4.59	116.50	5.91	150	7.70	3.50
3/4"	20	0.75	19	7.52	191	5.14	130.50	7.09	180	12.80	5.80
1"	25	1.00	25.4	8.50	216	5.83	148	10.43	265	28.66	13.00
1-1/2"	40	1.50	38	9.49	241	6.32	160.50	11.81	300	50.71	23.00
2"	50	2.00	51	11.50	292	7.56	192	15.75	400	63.90	29.00

Reduced Port													
Size		d		D		L		H		W		Weight	
in	mm	in	mm	in	mm	in	mm	in	mm	in	mm	lb	Kg
1/2*3/8	15*10	0.37	9.5	0.50	12.7	6.50	165	4.59	116.50	5.91	150	11.02	5.00
3/4**1/2	20*15	0.50	12.7	0.75	19	7.52	191	4.59	116.50	5.91	150	17.64	8.00
1*3/4	25*20	0.75	19	1.00	25.4	8.50	216	5.14	130.50	7.09	180	26.46	12.00
1-1/2*1	40*25	1.00	25.4	1.50	38	9.49	241	5.83	148	10.43	265	37.48	17.00
2*1-1/2	50*40	1.50	38	2.00	51	11.50	292	6.32	160.50	11.81	300	59.52	27.00

Class 900 Dimension and Weight

Full Port											
Size		D		L		H		W		Weight	
in	mm	in	mm	in	mm	in	mm	in	mm	lb	Kg
1/2"	15	0.50	12.7	8.50	216	4.59	116.50	5.91	150	22.04	10
3/4"	20	0.75	19	9.02	229	5.35	136	7.09	180	28.66	13
1"	25	1.00	25.4	10.00	254	6.20	157.50	10.43	265	44.09	20
1-1/2"	40	1.50	38	12.01	305	6.99	177.50	11.81	300	90.39	41
2"	50	2.00	51	14.49	368	8.35	212	15.75	400	132.28	60

Class 900 Dimension and Weight

Reduced port													
Size		d		D		L		H		W		Weight	
in	mm	in	mm	in	mm	in	mm	in	mm	in	mm	lb	Kg
1/2*3/8	15*10	0.37	9.5	0.50	12.7	8.50	216	4.59	116.50	5.91	150	19.84	9
3/4*1/2	20*15	0.50	12.7	0.75	19	9.02	229	4.59	116.50	5.91	150	24.25	11
1*3/4	25*20	0.75	19	1.00	25.4	10.00	254	5.35	136	7.09	180	35.27	16
1-1/2*1	40*25	1.00	25.4	1.50	38	12.01	305	6.20	157.50	10.43	265	55.12	25
2*1-1/2	50*40	1.50	38	2.00	51	14.49	368	6.99	177.50	11.81	300	123.46	56

Class 1500 Dimension and Weight

Full Port											
Size		D		L		H		W		Weight	
in	mm	in	mm	in	mm	in	mm	in	mm	lb	Kg
1/2"	15	0.50	12.7	8.50	216	4.59	116.50	5.91	150	22.04	10
3/4"	20	0.75	19	9.02	229	5.35	136	7.09	180	28.66	13
1"	25	1.00	25.4	10.00	254	6.20	157.50	10.43	265	44.09	20
1-1/2"	40	1.50	38	12.01	305	6.99	177.50	11.81	300	90.39	41
2"	50	2.00	51	14.49	368	8.35	212	15.75	400	132.28	60

Reduced port													
Size		d		D		L		H		W		Weight	
in	mm	in	mm	in	mm	in	mm	in	mm	in	mm	lb	Kg
1/2*3/8	15*10	0.37	9.5	0.50	12.7	8.50	216	4.59	116.50	5.91	150	19.84	9
3/4*1/2	20*15	0.50	12.7	0.75	19	9.02	229	4.59	116.50	5.91	150	24.25	11
1*3/4	25*20	0.75	19	1.00	25.4	10.00	254	5.35	136	7.09	180	35.27	16
1-1/2*1	40*25	1.00	25.4	1.50	38	12.01	305	6.20	157.50	10.43	265	55.12	25
2*1-1/2	50*40	1.50	38	2.00	51	14.49	368	6.99	177.50	11.81	300	123.46	56